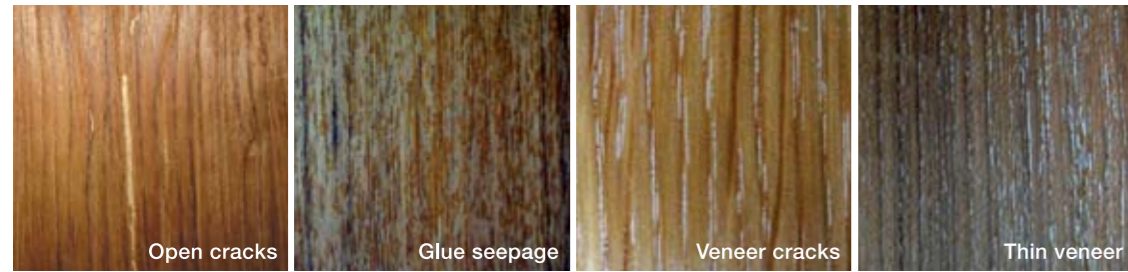


choosing veneer

thick vs thin

Unlike 0.6mm-thick veneer, conventional veneer is thinner. This means it cracks & discolours easily leaving a poor quality finish. Conventionally thinner veneer also lacks the rich, natural sheen of 0.6mm-thick veneer.



Conventional thin veneer



one species, many effects

The veneer cut from 2 trees of the same species can be surprisingly different. Each will have its own unique effect in an interior design.

Unless you personally inspect & select which piece & effect you want, you could end up with something you don't want.

- 1. Ebony with flowery grain
- 2. Ebony with straight, narrow grain

solution? you need to specify, specify, specify.

learn to specify, specify, specify

In specifying veneer, you need to consider:

- Design intent – what grain pattern & colour for the intended ambience
- Sequence – multiple wall panels mean veneers from the same tree
- Natural markings – how to use small knots, gums, sugar marks & flecks to aesthetic advantage
- Density & strength of figures, burls, pommele & curly
- Size – the longer the veneer, the harder the pattern repetition
- Veneer cutting method – quarter cut, crown cut or rotary slice, etc
- Matching method – book match, slip match or pattern match

example of specification

Thickness	Species	Pattern selected	Cut	Matching method	Supplier
0.6mm	Cherry	Log # xxxx	Quarter	Book Match	Cantolli Sdn Bhd



Cantolli Sdn Bhd (55837-P)

37, Jalan TP 7/7, UEP Industrial Park
40400 Shah Alam, Selangor D. E., Malaysia
T (603) 5192 5632 / 5633 F (603) 5192 5630

E info@cantolli.com www.cantolli.com



FEEL THE BEAUTY[®]
veneer chart



Sycamore Koto Birch Chen-Chen Maple



Akostika Fig. Sycamore Fig. Maple Curly Birch Curly Maple



Eucalyptus Pommele Sapeli Pommele Makore Pommele Bubinga Pommele Mahogany Crotch



White Beech Poplar China Ash White Ash Alder



Fig. Ash Fig. Beech Avodire Fig. Ash Brown Heart Green Heart Poplar



Purple Ray Australian Black Heart White Beech Black Heart Satin Apple Tineo



Red Oak Steamed Beech Red Elm Agathis Limba



Lacewood Block Fig. Anigre Fig. Taba Swiss Pear Fig. Anigre



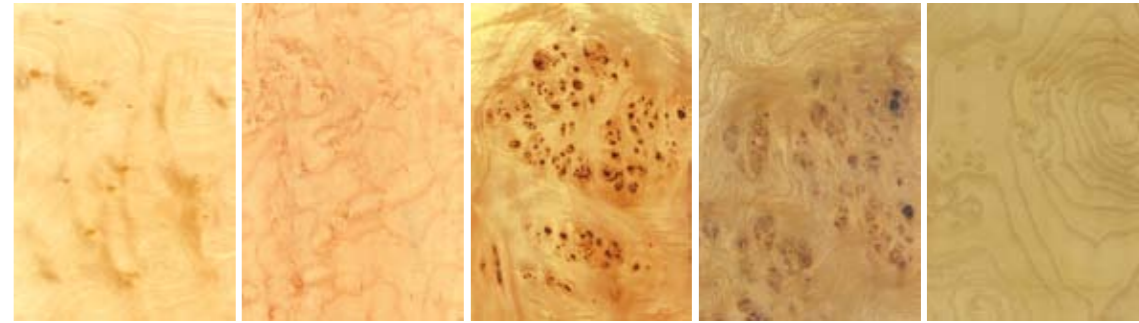
Tamo Lacewood Cluster Luoro Preto Abeto Ebony



Kembang Semangkok White Oak Sassafras Sagawa Walnut



Douglas Fir Fig. Movingui Fig. Eucalyptus Golden Teak Silky Oak



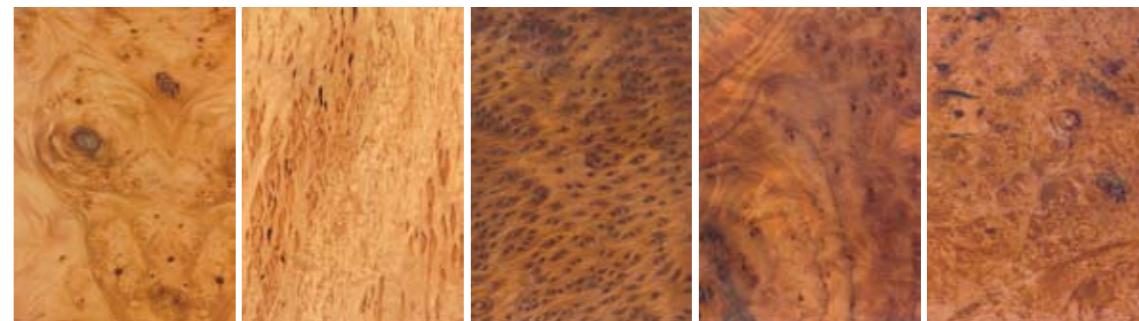
Sycamore Cluster Maple Birdseye Mapa Burl Oak Burl Ash Burl



Nyatoh Anigre Cherry Makore Burmese Teak



Limbano Afarano Zebrano Fig. Mutenye Mutenye



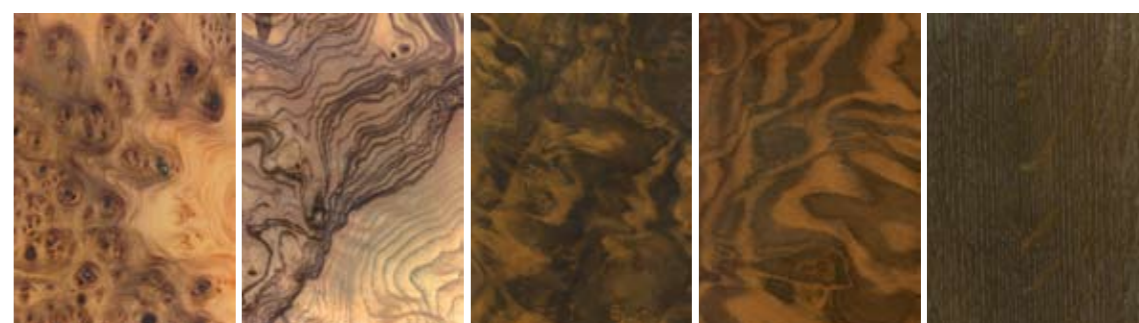
Madrona Burl Karelian Birch Burl Redwood Burl Champhor Burl Maple Burl



Bubinga Sapeli Brazilian Mahogany Khaya Mahogany Padouk



Block Fig. Makore Indian Rosewood Santos Rosewood Purple Heart Wenge



Elm Burl Olive Ash Burl Walnut Burl Walnut Cluster Smoky Oak